



Granab subfloor systems installation instructions

System 3000 N

System 7000 N

System 9000 N



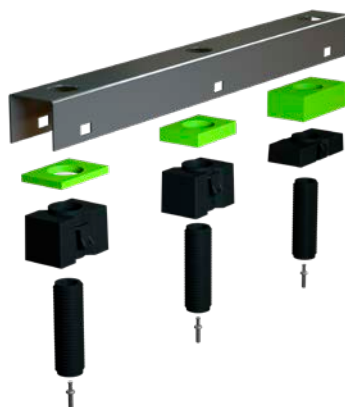
Granab®
Golvregelsystem

Installation instruction for

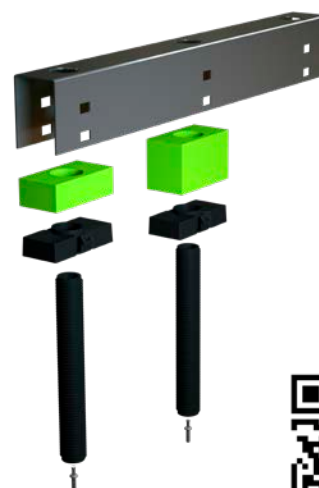
System 3000 N



System 7000 N



System 9000 N



Girders with support block and dampening element, adjustment screw and concrete anchor.

Watch instruction films at www.granab.se

Important general points

NB: Always ensure that the flooring manufacturer's requirements are fulfilled regarding expansion joints, gaps against walls, etc.

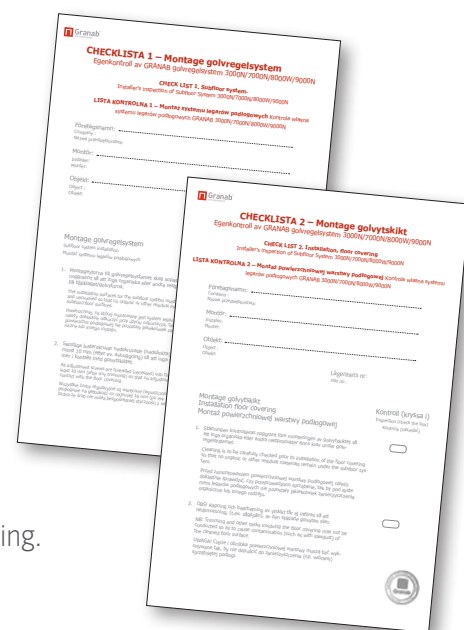
Before and after installation, all surfaces must be **thoroughly cleaned**.

All adjustment screws must be carefully secured in the subfloor with concrete anchors or concrete screws. If not **all adjustment screws** are secured properly, there is a risk of creaking and unevenness in the floor surface layer after installation.

Adjustment screws must always be recessed into the floor girders so that the upper edges of the adjustment screws do not come in contact with the floor covering, which would cause "bridging" in the sound insulation.

When **installing chipboard or chipboard/parquet** on the girders, it is very important that the chipboard or parquet is not in contact with walls. There must always be a gap of about 5 mm between the walls and chipboard/parquet so that the floor is able to move freely. This is necessary to ensure that the planned sound insulation is attained.

Furthermore, relative humidity in the room is **very important to take into consideration when using wood-based flooring**, both during and after laying. The manufacturer's instructions must be carefully followed.



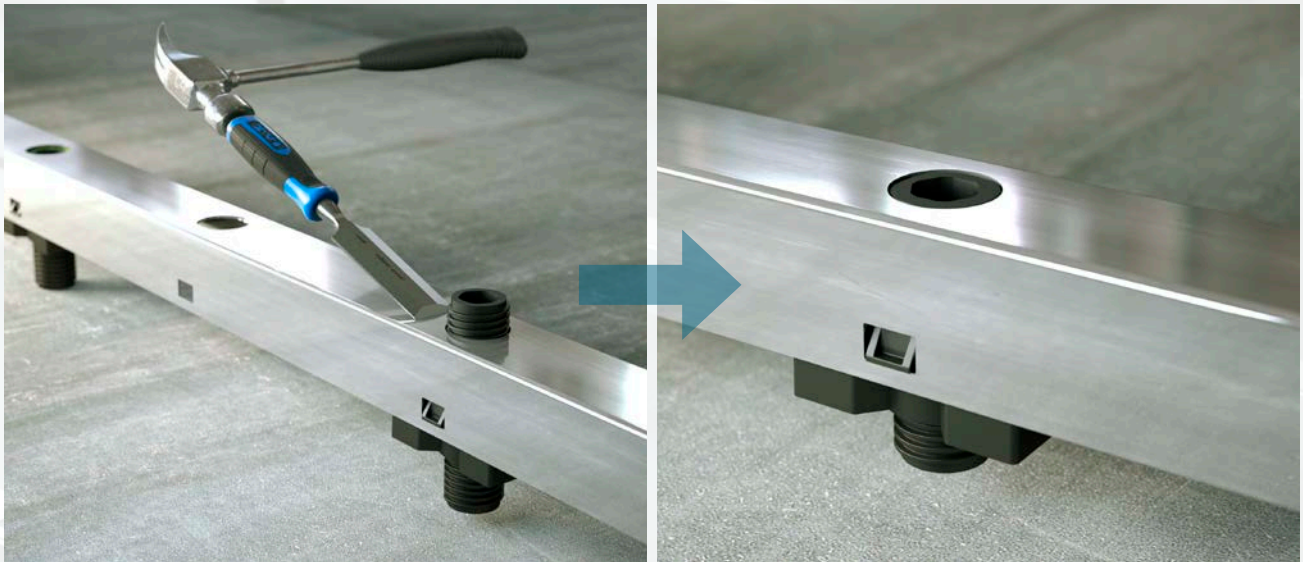
Carefully follow the points on the installer's checklist!



Installation instructions adjustment screws

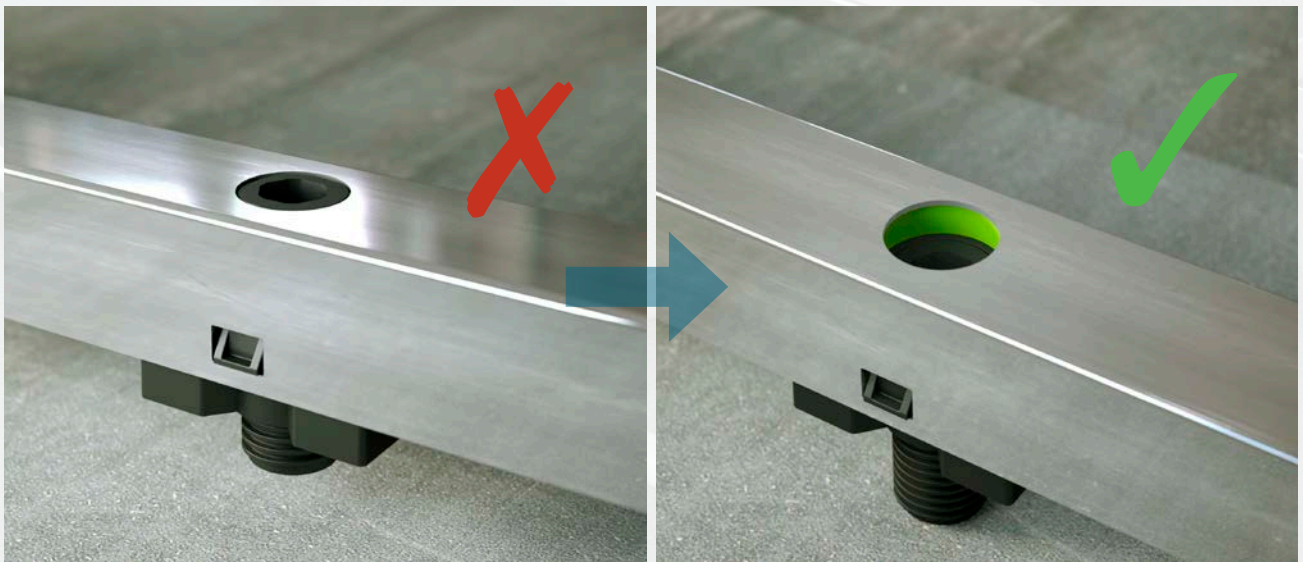
THIS STEP IS VERY IMPORTANT AND MUST BE FOLLOWED
FOR ALL ADJUSTMENT SCREWS THROUGH THE INSTALLATION

Cutting off or cutting and adjustment of adjustment screws



When all girders have been levelled to 10 mm below the final height with 2 fixing points in each girder, the screws must be cut off flush with the top of the girders. The screws are cut off with the help of chiselling iron. The adjustment screws can be cut to the correct length before starting the installation.

Counter sinking of adjustment screws



When the screws in the 2 fixing points in each girder have been cut off, all girders must be adjusted up 10 mm to the final height.

NOTE! The reason why the adjustment screws are cut and the girders are adjusted up 10 mm after the adjustment screw has been cut is that the upper edge of the adjustment screw must not come into contact with the overlying floor layer and the screws must therefore be countersunk in the girder. Otherwise, "bridging" will occur in the sound insulation if the top of the screw comes into contact with the floor layer. The adjustment screws must go into the support block by at least 10 mm.

Installation tools Granab subfloor systems



Concrete drill bit for concrete anchors



Cat. no.: 8710. 6 x 100 mm



Cat. no.: 8720. 250 mm short



Cat. no.: 8740. 460 mm long



Cat. no.: 8840/8841. (Drill bit extension with 100 mm drill bit)

Cutter for recessing adjustment screws in girders



Cat. no.: 8600.

Screwing tool for adjusting floor girder heights (for screwdrivers)



Cat. no.: 8100. Short model



Cat. no.: 8200. Long model



Cat. no.: 9300 Tool: Girder spacing 300 mm.



Cat. no.: 9400 Tool: Girder spacing 400 mm.



Cat. no.: 9500 Tool: Girder spacing 500 mm.



Cat. no.: 9600 Tool: Girder spacing 600 mm.

Mandrel for installation of concrete anchors (one of each included in an installation kit)



Mandrel for recessing in predrilled holes. Cat. no.: 850 C. Length: 1000 mm



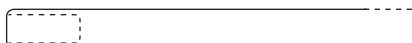
Mandrel for final fixation. Cat. no.: 850 C. Length: 1000 mm



Mandrel for recessing in predrilled holes. Cat. no.: 850 B. Length: 450 mm



Mandrel for final fixation Cat. no.: 850 B. Length: 450 mm



Mandrel for recessing in predrilled holes.



Mandrel for final fixation



Mandrel for recessing in predrilled holes. Cat. no.: 850 A. Length: 250 mm



Mandrel for final fixation Cat. no.: 850 A. Length: 250 mm



Insulation bracket

Cat. no.: 0440 (for 40 mm insulation plate)

Cat. no.: 0480 (for 80 mm insulation plate)

T-wrench for manually adjusting floor girder heights

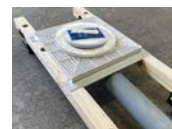
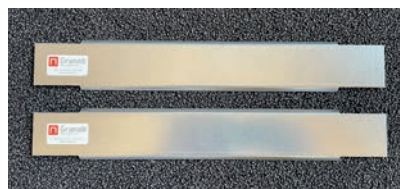


Cat. no.: 8300.

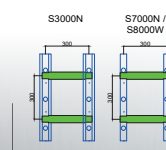


Assembly kit

For floor drain



Granab's assembly kit for floor drain, includes two steel pieces to complement the Granab system with.



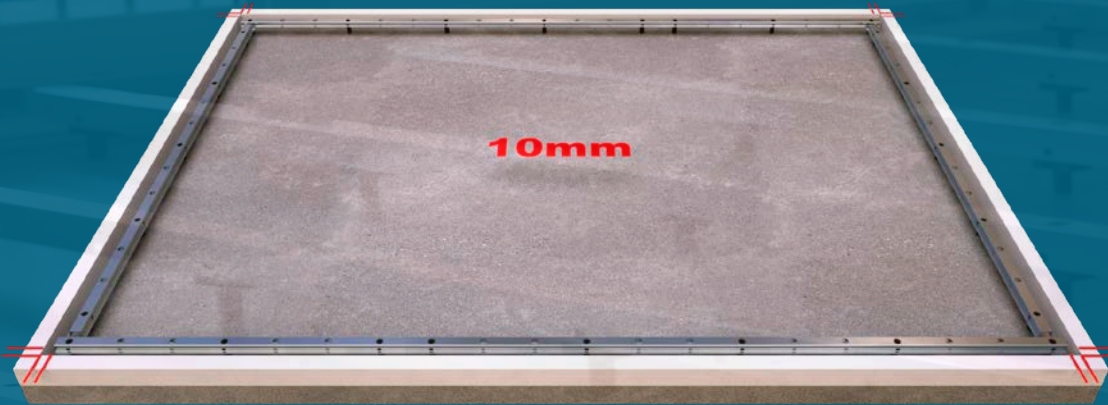
Granab
Golvregelsystem

Bygg och Miljöteknik Granab AB
Tel: +46 (0) 322 44 74 50 | Telefax: +46 (0) 322 44 74 55
Post / godadress: Åkerigatan 2, 447 37 Vårgårda
E-mail: post@granab.se | www.granab.se
Väst / Deliveryadress: Åkerigatan 2 | SE-447 37 Vårgårda | Sweden



Laying out girder

ALWAYS USE THE GIRDER SPACERS AVAILABLE IN LENGTHS: 300, 400, 500, 600 MM.



Start installation by laying out perimeter and keep a distance of at least 10mm from the wall.



Lay out the first girder with 400mm c/c distance to the frame girder and then lay the other girders with 600mm c/c spacing (c/c spacing may vary depending on surface layer or specific requirements) The distance between girders must be at least 5 mm.



The girders are laid out according to the principle drawing or proposed layout drawing by Granab for a specific project.

Installation step by step

- 1.** Girder with adjustment screws. Red line shows the finished height.



- 2.** Start by adjusting one end of the girder to 10 mm



- 3.** Drill approximately 30 mm into the structural surface through the guide hole in the adjustment screw at the girder ends.



- 4.** Drop the concrete anchors into both adjustment screws.



- 5.** Fix/screw the concrete anchor/concrete screw on both ends. For concrete anchors use mandrel no. 1.



- 6.** Trim the adjustment screw flat with the top of the girder. The adjustment screws can be cut to the correct length before starting the installation.



Installation step by step

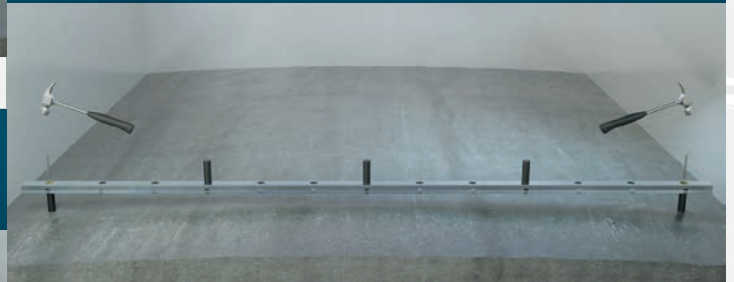
7.

Adjust the girder to final height.



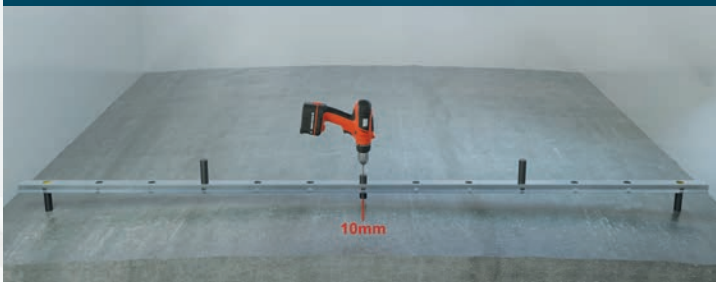
8.

Fix/screw the concrete anchor/concrete screw. For concrete anchor use installation mandrel No. 2.



9.

Adjust the center screw to 10 mm above the floor structure.



10.

Trim the remaining adjustment screws flat with the top of the girder. The adjustment screws can be cut to the correct length before starting the installation.



11.

Screw the adjustment screw down slightly towards the floor structure.



12.

Drill with a 5 mm drill bit about 30 mm into the floor structure through the adjustment screw.

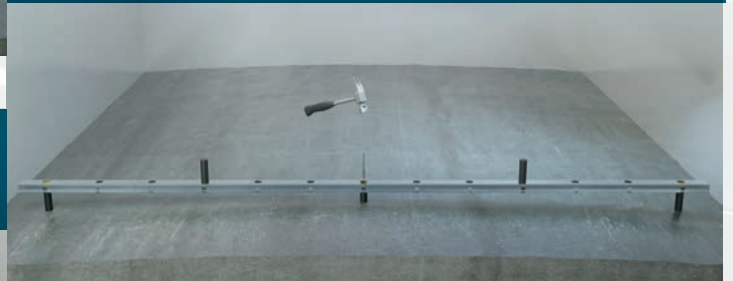


Installation step by step

13. Drop the concrete anchor/concrete screw into the adjustment screw.



14. Fix/screw the concrete anchor/concrete screw on both ends. For concrete anchors use mandrel no. 1.



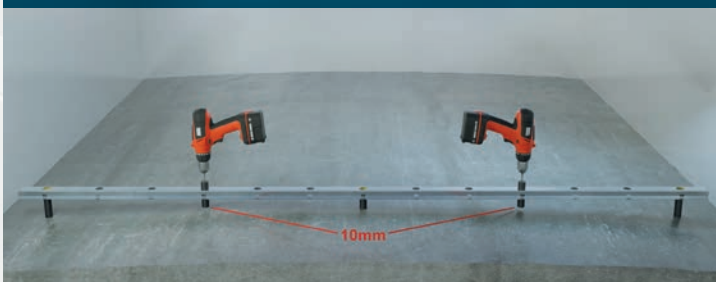
15. Adjust the center screw down to the floor structure.



16. Fix/screw the concrete anchor/concrete screw. For concrete anchor use installation mandrel No. 2.



17. Screw down the remaining adjustment screws to 10 mm above the girder and then continue installation according to points 10-16.



18. The girder is fully installed!



General conditions and recommendations

Level adjustment using laser levelling



Cutting girders with a jigsaw



The adjustment screws can be cut to the correct length before starting the installation.

Ergonomics during installation process



Screwing tool.



Mandrel.

All installation tasks can be carried out in comfortable working positions using the long screwing tool model and long mandrel model.

Installation example

SEALING AND INSTALLATION AT EXTRA HIGH HEIGHT

Sealing at installation height above 250 mm



For heights above 250 mm, the floor surface layer can be sealed in the corners of the room for lateral stabilisation.

Installation at extra high height



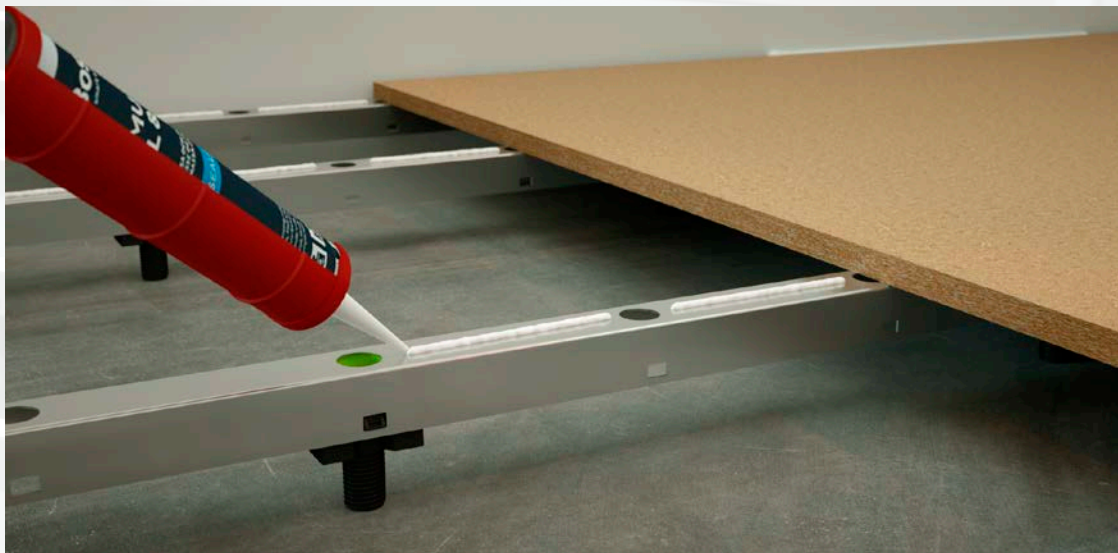
As standard, the height level of the Granab Subfloor System 7000 can be adjusted up to 420 mm. If heights are preferred up to approximately 1000 mm, the required height of masonite beams are fitted to the Granab girders.

Masonite beams are secured to Granab girders with Casco Superset nr 3879 or equivalent self-tapping screws. NB: Mounting screws must not come in contact with adjustment screws/support blocks.

Installation example

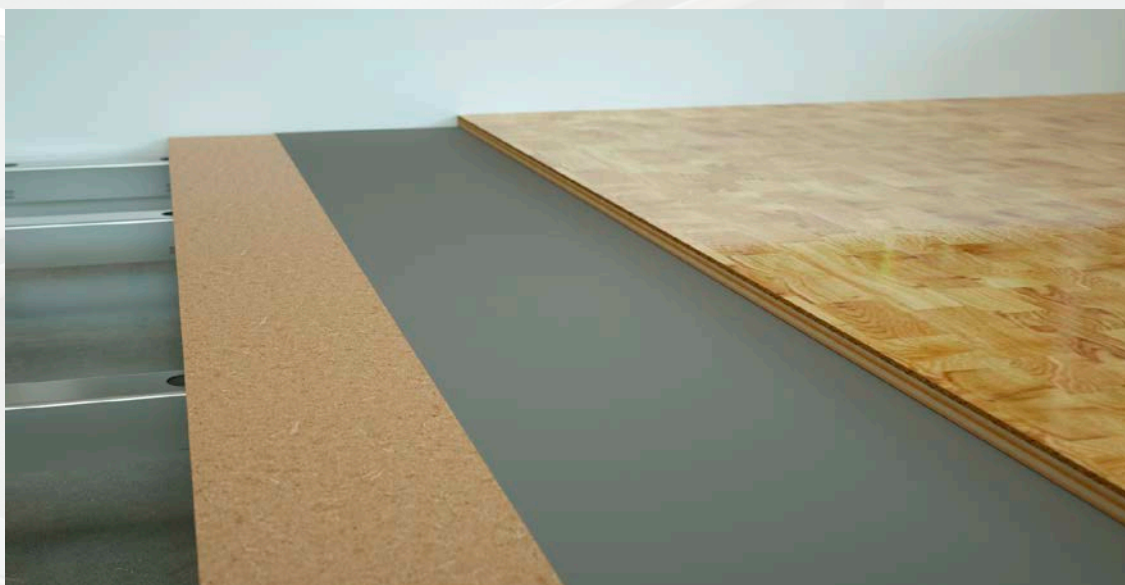
FLOORING PAPER AND GLUE.

Gluings



When gluing chipboard against the girder use Casco Superset nr 3879 or equivalent

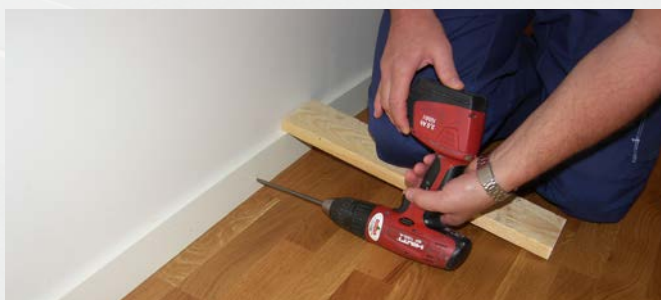
Floor paper



Floor paper is used between the chipboard and parquet to remove slapping between layers.

Installation of skirting

When attaching the skirting, it must be pressed hard down against the floor covering.



Example of installation at high height

As standard, the height level of the Granab Subfloor System 7000 can be adjusted up to 420 mm. If heights are preferred up to approximately 1000 mm, the required height of masonite beams or Z section are fitted to the Granab girders.



7000N high height with Masonite beam + 38 mm chipboard + parquet



7000N high height with steel Z section + 38 mm chipboard + mat

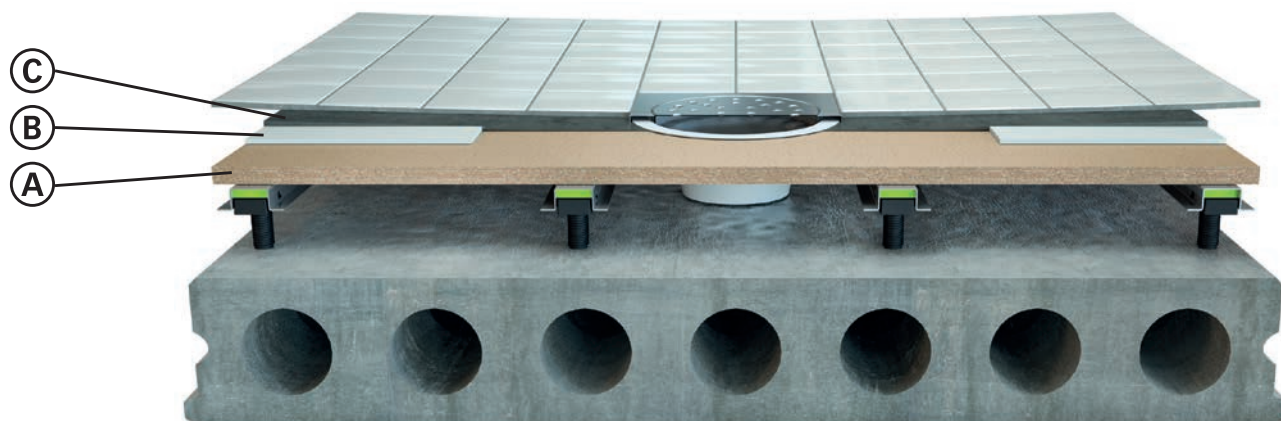
Tiled surfaces



System 3000N c/c 300mm

Granab systems – which consist entirely of non-organic materials – are not sensitive to moisture and at the same time, provide effective impact and airborne sound insulation. Example, remodelling: Granab subfloor system, c/c 300 mm, with 22-mm chipboard, sheet of non-organic material, moisture barrier, tiles.

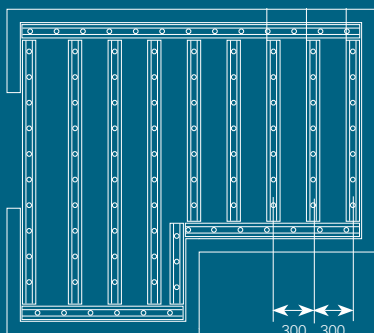
Bathrooms



A: Chipboard flooring, 22 mm

B: Sheet of non-organic material.

C: Floor levelling compound.



General drawing for tiled area.
The system is installed with a c/c 300 mm.

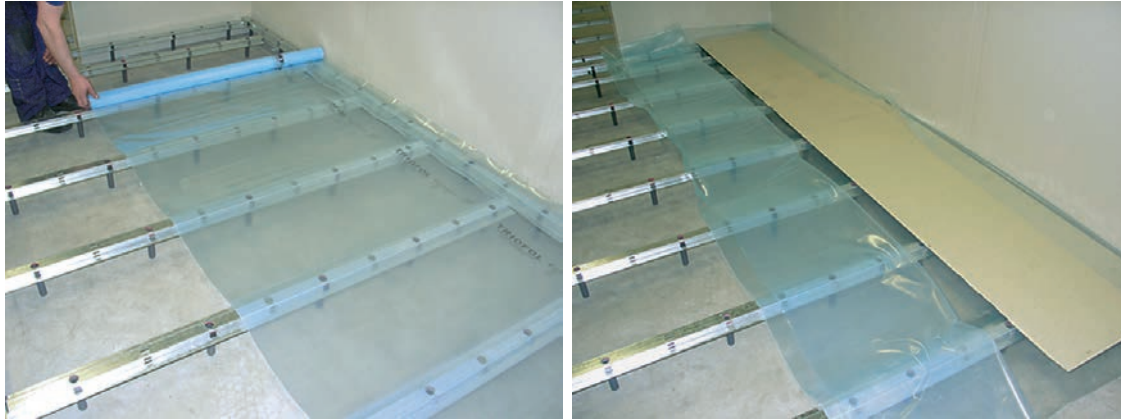
Granab subfloor systems with tiling have been tested by the SP Technical Research Institute of Sweden with respect to deflection and strength properties.



Installation of plastic film on Granab girders

In moist environments. NB: The plastic film is installed above the girders – not directly on the concrete subfloor.

Plastic film



Granab systems, including girders, are entirely non-organic and not affected by moist environments. By placing the plastic film over the girders, effective, long-lasting moisture protection is obtained with the floor layer above

More information and instructional videos are available at www.granab.se

Granab

CHECKLISTA 1 – Montage golvreghsystem
Egenkontroll av GRANAB golvreghsystem 3000N/7000N/8000W/9000N

CHECK LIST 1. Subfloor system.
Installer's inspection of Subfloor System 3000N/7000N/8000W/9000N

LISTA KONTROLNA 1 – Montaż systemu legarów podłogowych Kontrola własna systemu legarów podłogowych GRANAB 3000N/7000N/8000W/9000N

Företagsnamn:
Company:
Firma/produktionsort:

Montör:
Installer:
Montör:

Objekt:
Object:
Ort:

Lägenhets nr:
Flat no.:
Kvadrant:

Montage golvreghsystem
Subfloor system installation
Montaż systemu legarów podłogowych

Kontroll (kryssa i)
Inspection (check the box)
Kontrola (zakreślić)

1. Montageytorna till golvreghsystemet skall sesas och dimensioneras noggrant så att inga organiska eller andra reaktioner finns kvar på bygglaget/golvytorna.
The installation surfaces for the subfloor system must be carefully swept and measured so that no organic or other residual materials remain on the subfloor/floor surfaces.
Pracownicy, nie zostawiając systemu legarów podłogowych należy dokładnie osłuszyć przy użyciu szczotki, tak by na powierzchni powierzchni podłogowej nie pozostały jakiegokolwiek zanieczyszczenia organiczne lub innego rodzaju.

2. Samtliga justeringskravar nedskrivna (nedskärning) i golvreghsystemet minst 10 mm (eller två snärvar) så att inga justeringskravar finns i kontakt med golvytorna.
All adjustment screws are threaded (reduced) into the floor girders by at least 10 mm (or two turns) so that no adjustment screws remain in contact with the floor covering.
Wszystkie śruby regulacyjne są wkładane (wpuszczane) w legary podłogowe na głębokość co najmniej 10 mm (np. odpruty), tak by żaden z nich nie miał bezpośredniego styku z powierzchnią podłogową.

Granab

CHECKLISTA 2 – Montage golvytskikt
Egenkontroll av GRANAB golvytskikt 3000N/7000N/8000W/9000N

CHECK LIST 2. Installation, floor covering
Installer's inspection of Subfloor System 3000N/7000N/8000W/9000N

LISTA KONTROLNA 2 – Montaż powierzchniowej warstwy podłogowej Kontrola własna systemu legarów podłogowych GRANAB 3000N/7000N/8000W/9000N

Företagsnamn:
Company:
Firma/produktionsort:

Montör:
Installer:
Montör:

Objekt:
Object:
Ort:

Lägenhets nr:
Flat no.:

Montage golvytskikt
Installation floor covering
Montaż powierzchniowej warstwy podłogowej

Kontroll (kryssa i)
Inspection (check the box)
Kontrola (zakreślić)

1. Stårinnan kontrolleras noggrant före monteringen av golvytskiktet så att inga organiska eller andra reaktioner finns kvar under golvytskiktet.
Cleaning is to be carefully checked prior to installation of the floor covering so that no organic or other residual materials remain under the subfloor system.
Przed zamontowaniem powierzchniowej warstwy podłogowej należy dokładnie sprawdzić, czy przygotowanie gruntu, tak by pod system legarów podłogowych nie pozostały jakiegokolwiek zanieczyszczenia organiczne lub innego rodzaju.

2. OBS! Kapping och bearbetning av ytskiktet får ej utföras så att nedsmutning, (t.ex. släppl), av den nylagt golvytan sker.
NB: Trimming and other tasks involving the floor covering may not be conducted so as to cause contamination (such as with shavings) of the cleaned floor surface.
UWAGA! Cięcie i obróbka powierzchniowej warstwy może być wykonywane tak, by nie doprowadzić do zanieczyszczenia (np. wiłkami) sprzątnięty podłogi.

Granab





Bygg och Miljöteknik Granab AB

Phone: +46 (0) 322-66 76 50 | Fax: +46 (0) 322-66 76 55

E-mail: epost@granab.se | www.granab.se

Visiting and delivery address: Åkerigatan 2 | SE-447 37 Vårgårda | Sweden